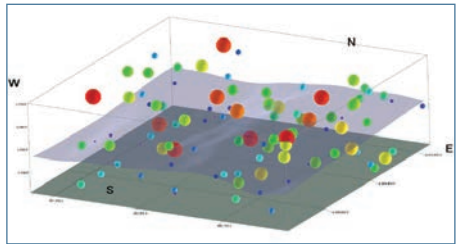


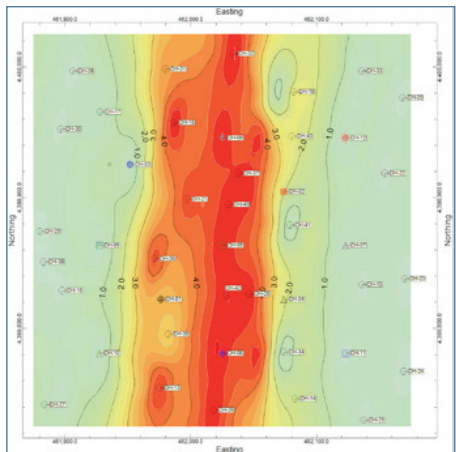
Mapping Tools

- Drillhole location maps with detailed data labels
- Assay, concentration maps with lines and color fills, custom color tables
- 3D surface displays: topographic surfaces, stratigraphic units
- 3D point maps
- Geology maps: plan or surface-based slices from block models
- Multivariate maps: pie chart, bar chart, starburst, spider maps
- Coordinate systems/conversions: lon/lat, UTM, State Plane, local, custom



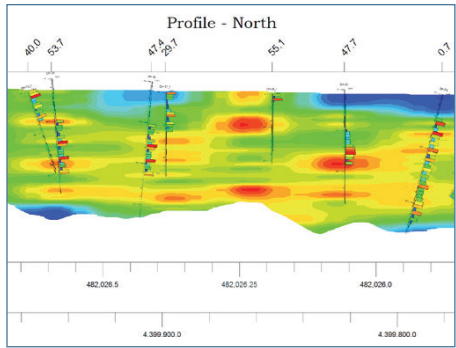
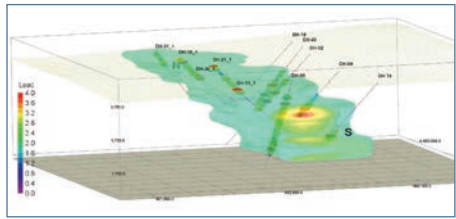
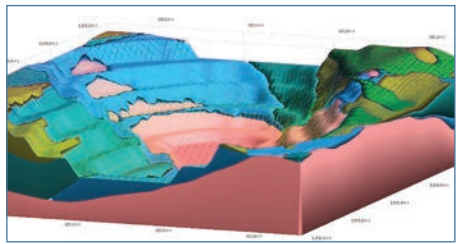
Borehole Database Tools

- Projected cross sections showing drillhole orientation
- Correlation panels: stratigraphy, lithology, grade/concentration, geophysics
- Drillhole logs in 2D and 3D with lithology, stratigraphy, bargraphs/disks, curves, color intervals, text
- Block model interpolation from XYZG point or drillhole data, display as voxels, isosurfaces, fence diagrams, 2D plan and section slices
- Surface model interpolation of stratigraphic units
- Downhole fracture display and modeling—closest fracture and closest fracture intersection
- Volume reports of lithologic, stratigraphic models
- Data imports: Excel, LAS, acQuire, Newmont, other databases



Other Tools

- Block model editor: 3D voxel/polyhedron editor or slice-based
- Volume calculations: grade statistics by level, extraction reports, GT calculators, floating cones model extraction tools
- Stereonet and rose diagrams, stereonet and rose maps
- Ternary diagrams, frequency histograms for source data and models
- Graphic output: 2D and 3D output to RockWorks, Google Earth
- 2D editing tools: contour lines, text, shapes, legends, images
- Composite scenes in 3D with maps, drillhole logs, surfaces, blocks, panels
- Page layout program for small to large format presentations and posters
- Exports to GIS Shapefiles, CAD DXF, raster formats, Google Earth
- Image import and rectification
- Program automation



Mining professionals rely on RockWorks point and contour maps, 2D and 3D log displays, projected sections, block model interpolating and editing, detailed volume calculations, and import/export tools in both exploration and production phases of their projects.